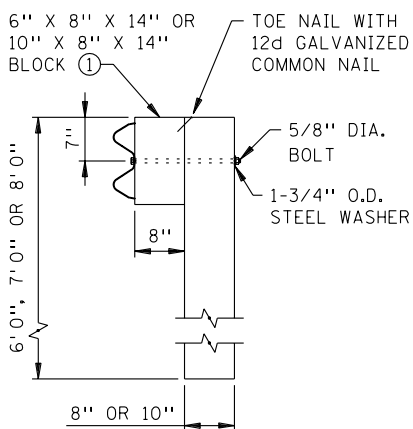
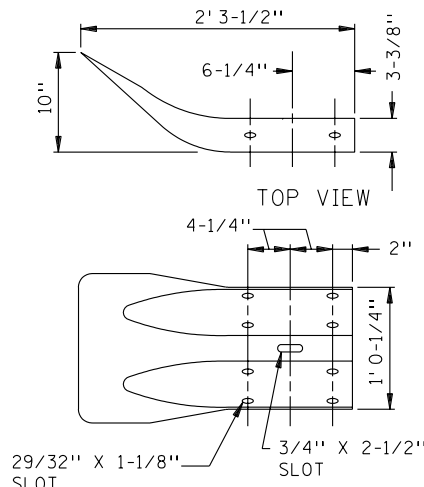


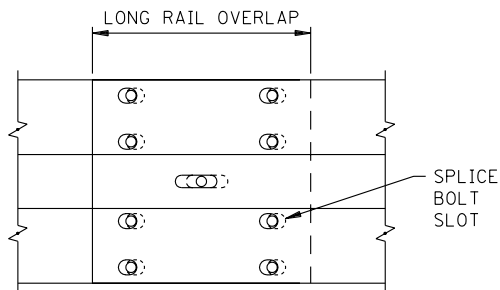
INSTALLATION



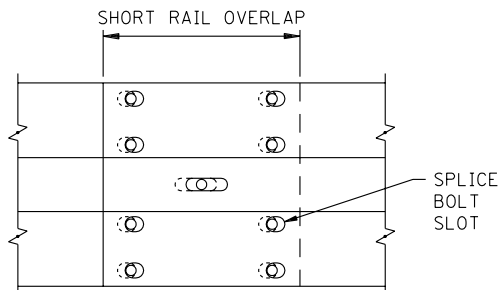
SAWED WOOD POST
6" X 8" OR 10" X 10"



W-BEAM FLARED END SECTION



CLOSED



APART

DEFINITION OF APART AND CLOSED SPLICES

NOTES:

SEE CHAPTER 10 IN THE ROAD DESIGN MANUAL FOR END TREATMENT INFORMATION.

STEEL PLATE BEAM GUARDRAIL, TERMINAL SECTION, RAIL SPLICE, SPLICE BOLT SHAPES AND DIMENSIONS SHALL CONFORM TO AASHTO M-180. ALL GUARDRAIL SHALL BE 12 GAGE.

GUARDRAIL INSTALLED ON CURVES WITH RADIUS OF 150 FT. OR LESS SHALL HAVE RAIL ELEMENTS SHOP CURVED.

USE THE SAME TYPE OF POST THROUGHOUT, ON NEW INSTALLATIONS.

WHEN RAIL SECTIONS USED FOR AN INSTALLATION ARE 12' 6" LONG, CENTER THE 8 SPLICE BOLTS ON TOP OF EACH OTHER (OR 1/2 APART AND 1/2 CLOSED). SEE DEFINITION OF APART AND CLOSED SPLICES.

WHEN 25 FT. LONG RAIL SECTIONS ARE USED FOR AN INSTALLATION, SET THE 8 SPLICE BOLTS ACCORDING TO THE AIR TEMPERATURE AS FOLLOWS:

BELOW 10° F. - SET 3/4 OF THE SPLICES APART AND 1/4 CLOSED.

10° F. TO 95° F. - CENTER THE SPLICE BOLT SLOTS OR SET 1/2 OF THE SPLICES APART AND 1/2 CLOSED.

ABOVE 95° F. - SET 1/4 OF THE SPLICES APART AND 3/4 CLOSED.

① USE A WOOD BLOCK OR AN APPROVED ALTERNATE.

APPROVED MAR. 21, 2003

M. R. K.

STATE DESIGN ENGINEER

STATE OF MINNESOTA
DEPARTMENT OF TRANSPORTATION
W-BEAM GUARDRAIL &
END ANCHORAGES
INSTALLATION WITH WOOD POSTS

SPECIFICATION REFERENCE

2554

REVISION DATE
11-11-03

STANDARD PLATE NO.

8307R

1 OF 4